

---

## Section 8: Jams, Jellies, Preserves, Pickles, Sauces & Liqueurs

---

**Stewards:** Janelle McKenzie

**Entry Fee:** \$1 per exhibit up to 30 items, then further items have free entry.

**Entries close:** Monday 9<sup>th</sup> March 2026

**Prizes:** 1<sup>st</sup> \$4 2<sup>nd</sup> \$3 unless otherwise stated Collections 1<sup>st</sup> \$6 2<sup>nd</sup> \$3

- All exhibitors must complete and sign the insurance indemnity form.
- Please note that all entries must be at the showground by 12noon on Wednesday preceding the show - i.e. 11<sup>th</sup> March 2026.  
All exhibits to be collected between 8am to 10am Sunday 15<sup>th</sup> March 2026 - unless otherwise organised with stewards. Any uncollected exhibits will be disposed of by the Stewards.
- Prize money may be collected on either day of the Show from the Secretary Office
- Prize money not collected from the show will only be paid providing a claim is made within 30 days.

### **Regulations**

Each bottle must be labelled on the lid with:

- **The section number**                      - **The class number**                      - **The contents description on jar**
- Minimum size jar 200 grams except for sauce, cordial, or vinegar bottles.
- All exhibits to be wholly made and presented by the exhibitor.
- Each exhibitor allowed only one entry in each class except classes where a collection of Jars is called for or in classes 14, 27, 41, 45, 52 & 56.
- Do not tightly seal jars or bottles.
- No clear paper tops to be used and no paper to be pasted under screw top lids.

**Most successful exhibitor:** Sash

**Most outstanding exhibit** \$25 *plus a champion ribbon sponsored by James Hall.*

### **Mary Kealy Perpetual Trophy**

The "Mary Kealy Perpetual Trophy" will be awarded to the most successful exhibitor percentage wise, in:

Section 8: Jams and Jellies

Section 9: Cookery

Section 10: Cut Flowers

Section 11: Pot Plants

Section 12: Arranged Flowers

Section 13: Fancy Work

To be eligible for the trophy, exhibitors must enter a minimum of 4 Sections with at least 2 class entries per section. Points awarded for 1<sup>st</sup>, 2<sup>nd</sup>, Champion Exhibit & Most Successful awards.

*Sponsored by B & J Doyle*

**1<sup>st</sup> \$60 2<sup>nd</sup> \$30.**

### **Jams, single bottles**

1. Apricot
2. Dried Apricot
3. Fig
4. Mulberry
5. Peach
6. Grape (dark)
7. Grape (light)
8. Plum (dark)
9. Plum (light)
10. Quince
11. Tomato (ripe)
12. Tomato (green)
13. Strawberry
14. Any other jam not listed
15. Best collection of jams, 3 bottles, not citrus

*N.B. Collections to have differing varieties.*

### **Marmalade**

16. Orange
17. Mandarin
18. Lemon & Lime
19. 4 Fruit
20. Best Collection of 3 Citrus Marmalades

*N.B. Collections to have differing varieties.*

### **Pickles, Preserves, Relishes & Sauces**

*Vacola Bottles or Jars permitted.*

35. Relish (any variety)
36. Green Tomato Mustard Pickle
37. Mustard Pickles (sweet)
38. Chutney (sweet)
39. Best collection of Chutneys, 3 bottles
40. Best collection of Pickles, 3 bottles
- N.B. Collections to have differing varieties.*
41. Tomato Sauce (Sauce bottles allowed)
42. Plum Sauce (Sauce bottles allowed)
43. Worcestershire Sauce (Sauce bottles allowed)
44. Any other sauce not listed (Sauce bottles allowed)
45. Preserved Vegetables Single or Mixed Variety
46. Preserved Fruit – Single or Mixed variety
47. Preserved Semi-Dried fruit in oil flavour enhancers permitted.
48. Any other Pickle, Preserve or Relish not listed

*N.B Please state pickling flavours on jars - do not use mustard.*

49. Cordial
50. Flavoured Vinegar

*N.B Please state flavours on bottles. Bottles will be opened. Contents label only please.*

### **Jellies, Butters & Cheese**

*Sponsored by Philip Edmonds*

21. Apple
22. Quince
23. Grape
24. Any other jelly not listed
25. Lemon Butter/Cheese
26. Passionfruit Butter/Cheese
27. Any other Butter/Cheese not listed

### **Liqueurs**

28. Cream or egg based e.g. Advocaat/Irish Cream
29. Spirit bases - e.g. Plum/Cumquat Brandy
30. Chocolate Rum

### **Chilli**

31. Chilli Jam
32. Chilli Oil
33. Chilli Chutney
34. Chilli Vinegar

### Novice Classes

Novice means exhibitors who have never won a prize at Gresford Show in any class in Section 8.

**Prizes:** 1<sup>st</sup> \$4 2<sup>nd</sup> \$3

### Jams, single bottles

- 51. Plum
  - 52. Grape
  - 53. Apricot
  - 54. Orange
  - 55. Any other jam not listed
  - 56. Best collection of jams - 3 bottles
- N.B. Collections to have differing varieties.*

### Jellies, Cheese and/or Butters

- 57. Quince
- 58. Apple
- 59. Any other Jelly not listed
- 60. Lemon Butter/Cheese

### Pickles & Sauces

- 61. Mustard Pickles Chutney- any variety
- 62. Tomato Relish
- 63. Tomato Sauce
- 64. Plum Sauce



### \*\*\*NEW\*\*\* Men's Section

***Class 65 will be judged by 2025 RAS Rural Achiever Winner, Mr. James Stephens***

*Class 65 is Sponsored by Janelle McKenzie*

65. Caramelised Onion Jam- ***Compulsory Recipe to be followed*** 1<sup>st</sup> \$25 2<sup>nd</sup> \$15 3<sup>rd</sup> \$10

### **Ingredients**

- |                             |                               |
|-----------------------------|-------------------------------|
| 1 Tbsp Butter               | 2 Tbsp Honey                  |
| 1 Tbsp Olive Oil            | ¼ tsp fresh ground pepper     |
| 6 Cups onion, thinly sliced | ¼ cup Whiskey or Bourbon      |
| ½ tsp chopped thyme         | 2 Tbsp White Balsamic Vinegar |

### **Method**

1. Heat Butter and Oil in large skillet over medium heat. Add the sliced onions and toss to coat. Stir in thyme, honey and pepper.
2. Cook, stirring occasionally, until golden brown (approx. 15-20 minutes). Remove the pan from the heat and stir in whiskey or bourbon, and balsamic vinegar.
3. Return pan to stove on high heat, bring to boil and then turn down to simmer.
4. Simmer until moisture is reduced and mixture thickens to a jam-like consistency (approx. 20-30 minutes)
5. Pour into sterilized jars and seal.

Visit our web site [www.gresfordshow.com.au](http://www.gresfordshow.com.au) or our Facebook page

---

## Section 9: Cookery

---

**Stewards:** Mrs. C Richardson, Mrs. K Turnbull, Mrs. J Grant, Mrs. S Cowley, Mrs. M Hill and Mrs. C Fenwick. Mrs. N. Campbell & Ms. M Campbell

**Entry Fee:** \$1 per exhibit up to 30 items, then further items have free entry.

**Entries close:** Monday 9<sup>th</sup> March 2026

- All exhibits must be at the Pavilion no later than 8:30am on the Friday of the Show- 13<sup>th</sup> March 2026. No late entries will be accepted.
- Each exhibitor is allowed one entry only in each class.
- All exhibits will be cut in half by judges before being judged. All exhibits to be bona fide work of the exhibitor. Any exhibit not complying with these stated conditions will not be accepted.
- **Please notify stewards on Friday morning if you wish to collect your cooking, otherwise entries will be binned.** Any containers left must be clearly labelled with entrant name.
- All icing to be butter or margarine icing only. No wire rack marks or ring tins.



**Ribbon with \$50 for Most Successful Exhibitor in Cookery Section Sponsored by Mrs. M Dent**  
**Champion Ribbon with \$20 in the memory of Miss Mary Kealy for Most Outstanding Exhibit**

*Classes 1 to 8 Sponsored by A & L Clements*

1. Six Plain Scones	1 <sup>st</sup> \$10	2 <sup>nd</sup> \$5
2. Six Lemon & Date Scones,	1 <sup>st</sup> \$10	2 <sup>nd</sup> \$5
3. Six Jam Drops	1 <sup>st</sup> \$10	2 <sup>nd</sup> \$5
4. Four Iced Cupcakes	1 <sup>st</sup> \$10	2 <sup>nd</sup> \$5
5. Six Anzac Biscuits	1 <sup>st</sup> \$10	2 <sup>nd</sup> \$5
6. Six Cookies, any variety	1 <sup>st</sup> \$10	2 <sup>nd</sup> \$5
7. Four Chocolate Brownies,	1 <sup>st</sup> \$10	2 <sup>nd</sup> \$5
8. Plate of Cooked Slice 6 pieces, no jelly,	1 <sup>st</sup> \$10	2 <sup>nd</sup> \$5

*Classes 9 & 10 Sponsored by DC & NP Horn*

9. Passionfruit & Lemon Syrup Cake	1 <sup>st</sup> \$15	2 <sup>nd</sup> \$10
10. Chocolate Iced Square chocolate icing on top only	1 <sup>st</sup> \$15	2 <sup>nd</sup> \$10

*Class 11 Sponsored by Mr. T Chaloner*

11. Marble Cake iced on top only	1 <sup>st</sup> \$15	2 <sup>nd</sup> \$10
----------------------------------	----------------------	----------------------

*Class 12 Sponsored by Mr. T Clements*

12. Date & Walnut Nut Loaf	1 <sup>st</sup> \$15	2 <sup>nd</sup> \$5
----------------------------	----------------------	---------------------

*Classes 13 & 14 Sponsored by Mrs. Jenny Hancock*

13. Best Homemade Loaf of Bread (Exc. Sourdough. See class 23)	1 <sup>st</sup> \$15	2 <sup>nd</sup> \$5
14. Banana Cake iced on top only, lemon icing	1 <sup>st</sup> \$15	2 <sup>nd</sup> \$5

*Class 15 Sponsored by Mrs. K Turnbull*

15. Carrot & Walnut/Pecan Cake iced on top only	1 <sup>st</sup> \$15	2 <sup>nd</sup> \$10
---	----------------------	----------------------

*Class 16 Sponsored by A & L Clements*

16. Sponge Cake any filling, iced on top only	1 <sup>st</sup> \$20	2 <sup>nd</sup> \$10
---	----------------------	----------------------

*Class 17 Sponsored by D & J Maroulis*

17. Brown Butter Loaf Cake iced on top only	1 <sup>st</sup> \$20	2 <sup>nd</sup> \$10
---	----------------------	----------------------

*Class 18 Sponsored by D & J Maroulis*

18. Boiled or Steamed Plum Pudding	1 <sup>st</sup> \$30	2 <sup>nd</sup> \$10
------------------------------------	----------------------	----------------------

*Class 19 Sponsored by Mrs. Jenny Hancock*

19. Boiled Fruit Cake	1 <sup>st</sup> \$25	2 <sup>nd</sup> \$10
-----------------------	----------------------	----------------------

Visit our web site [www.gresfordshow.com.au](http://www.gresfordshow.com.au) or our Facebook page

*Class 20 Sponsored by Gresford CWA*

**20. Ladies Committee Members: Custard Cake**

1<sup>st</sup> \$20 2<sup>nd</sup> \$10

*Iced on top only*

*Class 21 Sponsored by Mrs. C Richardson*

**21. ASC of NSW RICH FRUIT CAKE COMPETITION. (Compulsory Recipe)** 1<sup>st</sup> \$30 2<sup>nd</sup> \$20

**Ingredients:**

250g (8oz) of sultanas and currants	250g (8oz) chopped raisins
125g (4oz) chopped mixed peel	90g (3oz) chopped red glace cherries.
90g (3oz) blanched almonds	1/3 cup sherry or brandy
250g (8oz) plain flour	60g (2oz) self-raising flour
4 large eggs	250g (8oz) Butter
250g (8oz) soft Brown Sugar	
¼ teaspoon of each ground nutmeg, ground cloves & ground ginger	
½ teaspoon of almond & vanilla essence	
½ teaspoon lemon essence or finely ground lemon rind	

*NOTE: To ensure uniformity and depending on the size, it is suggested the raisins be snipped into 2-3 pieces, cherries into 4-6 pieces and almonds crosswise into 3-4 pieces.*

**Method:** Mix together all the fruits and nuts and sprinkle with the sherry or brandy and let stand overnight. Sift together the flours and spices. Cream together the butter and sugar with the essences. Add the eggs one at a time, beating well after each addition, then alternatively add the fruit and flour mixtures. Mix thoroughly. The mixture should be stiff enough to support a wooden spoon. Place the mixture into a prepared tin no larger than 20cm x 20cm (8inx 8in). Bake in a slow oven for approx. 3 ½ to 4 hours. Allow the cake to cool in the tin.

**SPECIALTY CAKE SECTION**

*Classes 22 & 23 Sponsored by Mrs. Jennifer Waterman*

**22. Orange or Pineapple Upside-down Cake**

1<sup>st</sup> \$30 2<sup>nd</sup> \$20

**23. Sourdough Bread**

1<sup>st</sup> \$30 2<sup>nd</sup> \$20

*Class 24 Sponsored by Mrs. S Cowley*

**24. Any Gluten Free Cake**

1<sup>st</sup> \$30 2<sup>nd</sup> \$20

*Class 25 Sponsored by Ms. J Grant*

**25. Six Monte Carlo Biscuits**

1<sup>st</sup> \$20 2<sup>nd</sup> \$10

*Class 26 Sponsored by family of the late Mrs. Marion Jordan*

**26. Fruit Pie, any filling, lattice or plain top, cooked in clear Pyrex dish**

1<sup>st</sup> \$30 2<sup>nd</sup> \$20

*Class 27 Sponsored by Mr. K Turnbull and family of the late Diedre Lawrence*

**27. Sultana Cake - Male Judge to be selected by Ken Turnbull,**

1<sup>st</sup> \$30 2<sup>nd</sup> \$20

*Class 28 Sponsored by Gresford CWA*

**28. Any Gluten Free Slice 6 pieces**

1<sup>st</sup> \$15 2<sup>nd</sup> \$5



*Class 29 Sponsored by the family of the late Mrs. M Horn*

29. **Decorated Cake – Nautical Theme**, must be an actual cake 1<sup>st</sup> \$30 2<sup>nd</sup> \$20

*Class 34 Sponsored by D & J Maroulis*

30. **Novelty Cake – Any Disney Theme** 1<sup>st</sup> \$30 2<sup>nd</sup> \$20

*Class 35 Sponsored by Mrs. Mary Lou Lawson*

31. **Charcuterie Board for any Occasion** 1<sup>st</sup> \$30 2<sup>nd</sup> \$20

*NOTE: Size not to exceed 30cm x 20cm,  
With one home made item to be specified*

**MENS SECTION**

*Classes 32-35 Sponsored by Mr. P Fleming*

32. **Six Lemonade Scones** 1<sup>st</sup> \$10 2<sup>nd</sup> \$5

33. **Four Cowyard Cakes** 1<sup>st</sup> \$15 2<sup>nd</sup> \$10

**Ingredients:**

1 cup sugar	2 eggs
1 teaspoon vanilla	1 cup plain flour
1/3 cup sultanas	1 cup self-raising flour
125g butter	

**Method:** Cream butter and sugar with electric beaters. Add one egg at a time, then vanilla. Slowly add sifted flours then add sultanas and combine. Drop tablespoon size mixture on a greased tray. Bake at 165C fan forced oven for 10-15 minutes.

34. **Bushman's Beer Bread** 1<sup>st</sup> \$15 2<sup>nd</sup> \$5

**Ingredients:**

3 ¾ cups self-raising flour	2 teaspoon sugar
1 can or bottle of beer 375ml	2 teaspoon salt

**Method:** Sift dry ingredients in bowl. Make well in the middle, add beer. Mix together with a knife to make soft sticky dough. Turn onto floured surface and lightly knead to smooth. Place in a well-greased loaf tin. Brush top with milk. Bake in a moderate to hot oven for approx. 50 mins or until cooked. Turn out and cool.

35. **Four Chocolate Crackles**, *Judged by Mr P. Fleming* 1<sup>st</sup> \$10 2<sup>nd</sup> \$5

**\*\* NEW\*\* REFRIGERATED CAKE SECTION**

*Class 36 & 37 Sponsored by Mrs. M Hill*

36. **Butterscotch Meringue Pie** 1<sup>st</sup> \$30 2<sup>nd</sup> \$20

37. **Cheesecake**, baked 1<sup>st</sup> \$30 2<sup>nd</sup> \$20

*Classes 38 and 39 Sponsored by D & J Maroulis*

38. **Chocolate Mousse Cake** 1<sup>st</sup> \$20 2<sup>nd</sup> \$10

39. **Bread & Butter Pudding**, *one small ramekin.* 1<sup>st</sup> \$20 2<sup>nd</sup> \$10

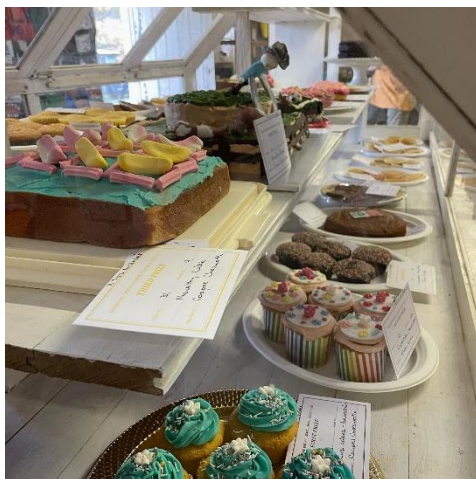


## **STUDENT COOKERY SECTION**

*Classes 40 to 43 Sponsored by Mrs. J Grant*

- |  |                      |                     |
|--|----------------------|---------------------|
| 40. Greens Choc Fudge Packet Cake iced on top,<br>packet label to be displayed | 1 <sup>st</sup> \$10 | 2 <sup>nd</sup> \$5 |
| 41. Four Caramel Cornflake Biscuits, from Australia's Best Recipes             | 1 <sup>st</sup> \$10 | 2 <sup>nd</sup> \$5 |
| 42. Four Muffins in papers, any variety  | 1 <sup>st</sup> \$10 | 2 <sup>nd</sup> \$5 |
| 43. Four Cupcakes cooked in papers and iced, no packet mixes                   | 1 <sup>st</sup> \$10 | 2 <sup>nd</sup> \$5 |

**All exhibits to be collected between 5:30-6:30pm Saturday 14th March 2026  
otherwise it will be binned.**



Visit our web site [www.gresfordshow.com.au](http://www.gresfordshow.com.au) or our Facebook page





# BOYDELL'S

— settled 1826 —



65 Allyn River Road, East Gresford NSW 2311 [boydells.com.au](http://boydells.com.au)

  [boydells1826](#)

Visit our web site [www.gresfordshow.com.au](http://www.gresfordshow.com.au) or our Facebook page



## Section 10: Cut Flowers

**Stewards:** Penny Kater, Liz Jones & Janie Chandler

**Entry fee:** \$1 per exhibit up to 30 items, then further items have free entry.

**Entries close:** Monday 9<sup>th</sup> March 2026

**Prizes:** 1<sup>st</sup> \$3 2<sup>nd</sup> \$2

*Sponsored by Mrs. Heather Maddocks, Penny Kater, Liz Jones, Jane Chandler, Elizabeth Hall & Jane Stevenson*

- All entries must be grown/produced by exhibitor.
  - All exhibits to be in the Pavilion not later than 8.30am on the first day of the show (Friday).
  - All blooms to be grown by the exhibitor unless otherwise specified.
  - All vases supplied by the Society.
  - All exhibits to be collected between 8am to 10am Sunday 15<sup>th</sup> March 2026, unless otherwise organised with Stewards. Anything not collected will be binned unless otherwise specified on the entry form then it will be handed in to the secretary's office to be collected.
  - Prize money may be collected from the cashier's office following completion of judging
- DISTINCT*** - all different colours  
***NOT DISTINCT*** - all the same colour  
***SHADES*** - all the same predominant colour  
***WHITE*** - pure; not to include cream, etc.  
***HINT*** - remove damaged petals from dressed classes.



### Exotics

1. Dahlias, Any variety - 3 cuts
2. Gerberas, single or double - 3 cuts
3. Geraniums, 3 cuts
4. Marigolds - 3 cuts
5. Zinnias, any variety - 3 cuts

*Classes 6-14 Sponsored by Mrs. Heather Maddocks*

6. Roses - Floribunda, 3 cuts, 1 cultivar (variety)
7. Roses - David Austin - 1 cut
8. Roses - David Austin - 3 cuts, not distinct
9. Roses - light shades, 3 cuts
10. Roses - dark shades, 3 cuts
11. Roses - 4 cuts from bud to full bloom, same cultivar (variety)
12. Roses - 1 picked from garden neither dressed or disbudded
13. Roses - 1 vase mixed, up to 12 stems (own container)
14. Vase of Flowers up to 12 stems (own container)

***Champion Rose/s*** may be individual bloom, vase, or cluster at the judges' discretion,

Prize \$20 sponsored by Ms. Di Thornton– Smith

***Grand Champion Cut Flower Exhibit*** may be individual bloom, vase or cluster at the judges' discretion, Prize \$25

Visit our web site [www.gresfordshow.com.au](http://www.gresfordshow.com.au) or our Facebook page



## **\*\*NEW\*\* Australian Natives**

*Classes 15-19 Sponsored by: Penny Kater, Liz Jones, Janie Chandler, Elizabeth Hall, Jane Stevenson*

**1<sup>st</sup> \$10    2<sup>nd</sup> \$5**

- 15. Grevilleas – mixed variety 3 cuts
- 16. Grevilleas – single variety 3 cuts
- 17. Callistemons – 3 cuts
- 18. Banksia – 1 to 3 cuts
- 19. Australian Natives – mixed variety 6 cuts

## **STUDENT CUT FLOWER SECTION**

*Class 27 Sponsored by the family of the late Ross Horn*

## **Ross Horn Encouragement Prize for Children**

The “Ross Horn Encouragement Prize for Children” is for children 12 years and under.

27. 12 Years and under, 1 or 2 flower cuts

**1<sup>st</sup> \$25    2<sup>nd</sup> \$15**

28. 13 – 17 Years, 3 cut flowers

**1<sup>st</sup> \$10    2<sup>nd</sup> \$5**



TRUSTWORTHY | HONEST | RELIABLE  
EXPERIENCED | INNOVATIVE  
KNOWLEDGEABLE

Hunter Stock and Land has been servicing producers of the Hunter Valley and surrounding areas since 1952.

We are:

- Stock and Station Agents
- Auctioneers
- Real Estate Agents.
- Rural Management Consultants

Hunter Stock & Land is your trusted partner in livestock and rural property marketing and management.

We empower you with innovative solutions, with a personal touch to support for your rural needs.

At Hunter Stock and Land, we have a strong connection to our local area and a passion for helping your business thrive!

### **Grant Whatham**

Principal | Stock and Station Agent  
Auctioneer | Real Estate Agent

E: [Grant@HunterSL.com.au](mailto:Grant@HunterSL.com.au)  
M: 0428 685 878

### **Shannon McCormack**

Property and Livestock Consultant

E: [Shannon@HunterSL.com.au](mailto:Shannon@HunterSL.com.au)  
M: 0488 114 777

### **Address:**

PO Box 36  
Branxton NSW 2335

O: 0427 383 388

E: [Admin@HunterSL.com.au](mailto:Admin@HunterSL.com.au)

### **Socials:**

@Hunterstockandland

[HUNTERSL.COM.AU](http://HUNTERSL.COM.AU)



Visit our web site [www.gresfordshow.com.au](http://www.gresfordshow.com.au) or our Facebook page

---

## Section 11: Pot Plants

---

**Stewards:** Melanie Collingwood-Boots

**Entry fee:** \$1 per exhibit for up to 30 items, then further items have free entry.

**Prizes:** 1<sup>st</sup> \$3 2<sup>nd</sup> \$2

*Sponsored by L Chiplin*

- To be staged in pots no larger than 20cm (8 inches) diameter. This will be strictly adhered to for safety requirements.
- No single entry can compete in more than one class.
- All blooms to be grown by the exhibitor.
- All hanging plants must have safe, strong & secure chains or wires.
- All exhibits to have: *Exhibitor's Name and Class Number & Title Entered* attached with a removable label (otherwise the item will not be able to compete).
- All exhibits to be in the pavilion by 4.00 pm on the Thursday prior to the Show – 12<sup>th</sup> March 2026
- All exhibits to be collected between 8am to 10am Sunday 15<sup>th</sup> March 2026 - unless otherwise organised with stewards anything not collected will be handed in to the secretary's office to be collected.
- Prize money may be collected from the Secretary office on completion of judging.

***Ribbon for Most Successful Exhibitor***

***Champion Ribbon for Most Outstanding Exhibit***

- |                                       |   |
|---------------------------------------|---|
| 1. Best Coleus                        | 14. Best Hanging Fern                                 |
| 2. Best Begonia                       | 15. Best Hanging Flowering Plant                      |
| 3. Best Flowering Begonia             | 16. Best Hanging Foliage Plant                        |
| 5. Any Other Fern                     | 17. Most Unusual Plant                                |
| 6. Best Coloured Leaf Geranium        | 18. Any Variegated Plant                              |
| 7. Best Herb Garden                   | 19. Plant in pot under 10cm (4in) diameter            |
| 8. Best Succulent or Cacti Pot Garden | 20. Cactus – any variety for Exhibitor UNDER 15 Years |
| 9. Dish Garden                        | 21. Best Chilli Bush                                  |
| 10. Best Bonsai                       | 22. Bush Tucker in Pot                                |
| 11. Best African Violet (Flowering)   | 23. Bush Tucker in Pot, Exhibitor UNDER 15 Years      |
| 12. Best Orchid (Flowering)           |   |
| 13. Any plant not mentioned           |   |



Visit our web site [www.gresfordshow.com.au](http://www.gresfordshow.com.au) or our Facebook page

---

## Section 12: Arranged Flowers

---

**Stewards:** Natalie Fourie

**Entry fee:** \$1 per exhibit up to 30 items, then further items have free entry.

**Prizes:** 1<sup>st</sup> \$15 2<sup>nd</sup> \$5

*Sponsored by One Agency – Sharon Hill*

- All exhibits to be collected between 8am to 10am Sunday 15<sup>th</sup> March 2026 – unless other arrangements have been made with stewards.
- All exhibits to be in the pavilion not later than 9.00am on the first day of the show (Friday 13<sup>th</sup> March 2026).
- Prize money may be collected from the Secretary office on completion of judging.

***Sash for Most Successful Exhibitor***

***Champion Sash for Most Outstanding Exhibit plus \$50 Voucher to The Flower Shop, Dungog***

1. Flowers in a Funky Container
2. Posy of Flowers
3. Ways with Weeds – what's in your backyard
4. Miniature Arrangement – not to exceed 10cm (4in) overall
5. Door Wreath – can be fresh, dried, or artificial
6. Native Australian Arrangement
7. Mixed Flowers from a Country Garden
8. Basket of Flowers and Fruits
9. Fun with Foliage
10. Dining Table Centerpiece – no higher than 20cm
11. Easter Themed arrangement of flowers- Embellishments and accessories allowed.

### **Novice Class**

*Novice competitors who have not won a first prize in the previous two Gresford Shows may enter in Classes 10.*

**Prizes:** 1<sup>st</sup> \$10 2<sup>nd</sup> \$5

11. Arrangement in a Tea Pot

### **STUDENT ARRANGED FLOWER SECTION**

**Prizes:** 1<sup>st</sup> \$5 2<sup>nd</sup> \$3 3<sup>rd</sup> \$2 and Place ribbons.

***Champion Ribbon Most Outstanding Exhibit and \$50 Voucher to The Flower Shop, Dungog***

12. 5 Years and under - Arrangement of Fresh Flowers
13. 7 Years & under - Fairy or Dinosaur Garden - in a shallow dish, tray or saucer, embellishments allowed
14. 9 Years & under - Arrangement of fresh Flowers in an egg cup
15. 11 Years & under – Arrangement of fresh flowers in a novelty vase
16. 13 Years & under – Arrangement of fresh flowers in a basket
17. 16 Years & under – Corsage to be worn on the wrist

---

## Section 13: Fancywork

---

**Stewards:** Mrs. B. Turnbull, Mrs. N. Bird, Mrs. M. Kealy,  
Ms. L. O'Sullivan, Ms. B. Crouch, Mrs. S. Hill, Mrs. T. Crouch and Ms. C. Hines  
**Entries close:** Monday 9th March 2026

- **All articles to be in the pavilion by 12 noon Wednesday 11th March 2026**
- Judging on Thursday 12th March 2026.
- No postal exhibit will be accepted unless freight or postage has been prepaid by the sender and return postage has been enclosed with the exhibit.
- The entry fee must accompany all entries.
- All exhibitors must complete and sign the Insurance Indemnity form.
- All entries must be bona fide work of the exhibitor.
- No work to be washed, dry cleaning may be permitted. No Hobbytex.
- All care taken but no responsibility for loss or damage. Please provide a labelled bag for your items.
- No single entry may compete in more than one class.
- Prize money will be paid on presentation of Prize Payment Card to the office.
- All exhibits must have the exhibitor's Name and the Class number entered attached.
- All crocheted doilies and duchess sets to be blocked and mounted on white cardboard or colour fast fabric.
- Only Sub Section C – LOCAL refers to residents of Dungog Shire residents, Dunns Creek & Glendonbrook.
- Seams may be hand sewn, machine over locked or bias bound. Hems in accordance with seam finishing.
- Entries should not have been previously entered at the Gresford Show unless otherwise specified.
- All exhibits to be collected between 8am to 10am Sunday 15th March 2026, unless otherwise organised with stewards.

**Entry fee:** \$1 per entry up to 30 items, then further items have free entry.

**Prizes:** 1<sup>st</sup> \$5 2<sup>nd</sup> \$3, unless otherwise specified

*Sponsored by Camyr Allyn Homestead and One Agency – Sharon Hill*

***Champion & Most Successful Exhibitor will be awarded in this Section.***

### Embroidery

1. Hand Embroidered Article
2. Machine Embroidered Article
3. Wool Embroidery (not tapestry)
4. Ribbon Embroidery
5. Candlewicking

### **Patchwork Quilting Applique**

*Could sleeves be put on the back of quilts for display purposes please.*

- |   |                      |                      |
|---|----------------------|----------------------|
| 6. Any Patchwork Quilt, hand & machine-made                   | 1 <sup>st</sup> \$20 | 2 <sup>nd</sup> \$10 |
| 7. Any Patchwork Article, handmade                            | 1 <sup>st</sup> \$20 | 2 <sup>nd</sup> \$10 |
| 8. Any Patchwork Article, machine made (not a Quilt)          | 1 <sup>st</sup> \$20 | 2 <sup>nd</sup> \$10 |
| 9. Any QUILTED Article, hand or machine made by the exhibitor | 1 <sup>st</sup> \$10 | 2 <sup>nd</sup> \$5  |
| 10. Appliqué, Any Article (not a Quilt)                       |                      |                      |

*Class 11 is Sponsored by Cathryn Hines*

- |                        |                      |                     |
|------------------------|----------------------|---------------------|
| 11. Childs Quilt       | 1 <sup>st</sup> \$15 | 2 <sup>nd</sup> \$5 |
| 12. Creative Patchwork |                      |                     |

*Class 13 is Sponsored by Sharon Hill*

- |                     |                      |                     |
|---------------------|----------------------|---------------------|
| 13. Appliqued Quilt | 1 <sup>st</sup> \$15 | 2 <sup>nd</sup> \$5 |
|---------------------|----------------------|---------------------|

**Dressmaking Apparel**

*Class 14 is Sponsored by Mrs. M Kealy*

- |   |                      |                     |
|---|----------------------|---------------------|
| 14. Best Made Garment                         | 1 <sup>st</sup> \$15 | 2 <sup>nd</sup> \$5 |
| 15. Apron                                     |                      |                     |
| 16. Any Article made from stretch fabric      |                      |                     |
| 17. Any Article made by machine               |                      |                     |
| 17A. Any Article made from recycled clothing. |                      |                     |

**Smocking & Heirloom Sewing**

- |                     |                      |                     |
|---------------------|----------------------|---------------------|
| 18. Childs Dress    |                      |                     |
| 19. Heirloom Sewing | 1 <sup>st</sup> \$10 | 2 <sup>nd</sup> \$5 |

**Crochet & Knitting**

- 20. Crochet Articles - sets included (blocked & mounted)
- 21. Child's Crochet Garment
- 22. Any Crocheted Article
- 23. Child's Hand Knitted Garment
- 24. Any Hand Knitted Cardigan or Jumper
- 25. Any Knitted Article

*Class 26 is Sponsored by Brittany Crouch*

- |  |                      |                     |
|--|----------------------|---------------------|
| 26. Best Crochet Rug   | 1 <sup>st</sup> \$15 | 2 <sup>nd</sup> \$5 |
| 27. Knitted or Crochet Edges e.g. towels, washers, handkerchief, etc |                      |                     |
| 28. Best Knitted Rug   |                      |                     |

**Spinning**

- |  |                     |                     |
|--|---------------------|---------------------|
| 29. Spinning – Specimen of hand spun wool with fibre sample attached.            |                     |                     |
| 30. Specimen hand-spun Mohair – plied –<br>not less than 50g dry weight, washed. | 1 <sup>st</sup> \$8 | 2 <sup>nd</sup> \$4 |
| 31. Any article made substantially from hand-spun Mohair –<br>any technique      | 1 <sup>st</sup> \$8 | 2 <sup>nd</sup> \$4 |
| 32. Any article made from hand spun wool   |                     |                     |

**Miscellaneous**

*Class 33 is Sponsored by Tammy Crouch*

- |  |                      |                     |
|--|----------------------|---------------------|
| 33. Cushion, any technique   | 1 <sup>st</sup> \$15 | 2 <sup>nd</sup> \$5 |
| 34. Coat Hanger, any technique                                     |                      |                     |
| 35. Novelty Coat Hanger  |                      |                     |
| 36. Tea Cosy (NO teapots please)                                   |                      |                     |
| 37. Piece of Work suitable for a small gift – to be less than 15cm |                      |                     |
| 38. Piece of Work suitable for a gift                              |                      |                     |
| 39. Hat made from Material   |                      |                     |
| 40. Wall Hanging   |                      |                     |



41. Any Article made from Felt
42. Any Article Not Mentioned
43. Bag (Any Technique)

#### **Toys, Dolls & Bears**

44. Dressed Doll other than Knitted or Crochet
45. Knitted or Crochet Doll
46. Soft Toy
47. Fabric Doll
48. Teddy Bear, hand or machine made
49. Dressed Teddy Bear



#### **Tapestry & Cross-Stitch**

*Classes 50 – 52 is Sponsored by Beth Turnbull*

- |                          |                      |                     |
|--------------------------|----------------------|---------------------|
| 50. Tapestry             | 1 <sup>st</sup> \$15 | 2 <sup>nd</sup> \$5 |
| 51. Counted Cross-stitch | 1 <sup>st</sup> \$15 | 2 <sup>nd</sup> \$5 |
| 52. Cross-stitch Framed  | 1 <sup>st</sup> \$15 | 2 <sup>nd</sup> \$5 |

#### **SUB SECTION C – LOCAL**

*Classes 53 – 62, Exhibitors must reside in the Dungog Shire*

- |  |                      |                     |
|--|----------------------|---------------------|
| 53. Cushion, any technique   | 1 <sup>st</sup> \$5  | 2 <sup>nd</sup> \$4 |
| 54. Any Article made by machine                                    | 1 <sup>st</sup> \$5  | 2 <sup>nd</sup> \$4 |
| 55. Article suitable for a Gift                                    | 1 <sup>st</sup> \$5  | 2 <sup>nd</sup> \$4 |
| 56. Any Cross Stitch Article                                       | 1 <sup>st</sup> \$10 | 2 <sup>nd</sup> \$5 |
| 57. Any Knitted Article  | 1 <sup>st</sup> \$5  | 2 <sup>nd</sup> \$4 |
| 58. Any Crochet article  | 1 <sup>st</sup> \$5  | 2 <sup>nd</sup> \$4 |
| 59. Best Piece of Crochet, restricted to exhibitors over 75 years. | 1 <sup>st</sup> \$5  | 2 <sup>nd</sup> \$4 |
| 60. Best Piece of Knitting, restricted to exhibitors over 75 years | 1 <sup>st</sup> \$5  | 2 <sup>nd</sup> \$4 |
| 61. Best Piece of Needlework                                       | 1 <sup>st</sup> \$5  | 2 <sup>nd</sup> \$4 |
| 62. Piece of Work not mentioned in Sub Section C                   | 1 <sup>st</sup> \$5  | 2 <sup>nd</sup> \$4 |

#### **STUDENT FANCYWORK SECTION**

- |   |                      |                     |
|---|----------------------|---------------------|
| 63. Tapestry, mounted                                     | 1 <sup>st</sup> \$10 | 2 <sup>nd</sup> \$5 |
| 64. Any Cross Stitch Article                              |                      |                     |
| 65. Any Crochet Article                                   | 1 <sup>st</sup> \$7  | 2 <sup>nd</sup> \$3 |
| 66. Best Hand Made Article                                |                      |                     |
| 67. Any Article Not Mentioned                             |                      |                     |
| 68. Article made from Felt                                |                      |                     |
| 69. Any Article not mentioned (bag, apron, soft toy etc.) |                      |                     |
| 70. Article suitable for a Gift                           |                      |                     |
| 71. Any Patchwork item                                    |                      |                     |
| 72. Best Dressed Doll or Teddy Bear                       |                      |                     |

***Most Successful Exhibitor 18 Years & Under \$10***

---

## Section 14: Art

---

**Stewards:** Helen Russell Brown, Mary-Lou Lawson, Bernie Gleeson & Meighan Jenkins

**Entries close:** Monday 9<sup>th</sup> March 2026

*Sponsored by Dungog Shire Council, Ann Dent, James and Elizabeth Hall, Helen Russell Brown & Rick Cannon, David Hilliard Memorial, Brigitte Uren, The Chevalley family, Sarah Sivyver, Gresford Community Group, The Hotel Beatty & Anonymous Patrons.*

**Please note:** All exhibits to be collected between 8.30am and 10.30am Sunday 15<sup>th</sup> March 2026, unless otherwise organised with stewards (between 5.30pm & 6pm Saturday 14<sup>th</sup> March)

- All entries must be produced by the exhibitor.
- **All exhibits must be in the Stan Kelehear Pavilion by 12:00pm Wednesday March 11th, 2026**
- **Exhibits more than 60cm x 90cm will not be accepted**
- All exhibitors must complete and sign the Insurance Indemnity form. All care is taken but the Show Society does not accept any responsibility for loss or damage.
- All work must be the original work of the entrant and not previously shown at Gresford Show.
- All work must be **ready to hang with back wire firmly affixed.**
- All exhibits must be labelled on the back with the artist's name, address and competing class.
- No exhibit to be entered in more than one class EXCEPT *Class 6: artists residing in Dungog Shire.*
- **Paintings and Sculpture will be accepted for sale.** If for sale, please notify the Show Secretary by marking on the entry form that the item is for sale. State the sale price including the commission. The Show Society commission on the sale of an exhibit is 20%.

### ***Opening Night and Preview Evening: Thursday 12<sup>th</sup> March 2026 6pm***

- |  |                     |   |
|--|---------------------|---|
| 1 <b>Painting:</b> Any Subject / Any Medium  | <b>Entry:</b> \$5   | <b>1<sup>st</sup></b> \$350 <b>2<sup>nd</sup></b> \$150 |
| 2. <b>Water Colour:</b> Any Subject  | <b>Entry:</b> \$5   | <b>1<sup>st</sup></b> \$150 <b>2<sup>nd</sup></b> \$70  |
| 3. <b>Miniature Painting:</b> Any Subject/ Any Medium<br>10cm X 10cm - without frame   | <b>Entry:</b> \$5   | <b>1<sup>st</sup></b> \$150 <b>2<sup>nd</sup></b> \$70  |
| 4.. <b>Drawing:</b> Any Subject / Any Medium   | <b>Entry:</b> \$5   | <b>1<sup>st</sup></b> \$150 <b>2<sup>nd</sup></b> \$70  |
| 5. <b>Margaret Sivyver Award</b> for local Artists, (Residing within the Dungog Shire) Realistic Landscape of the Allyn /Paterson Rivers Area.   | <b>Entry:</b> \$5   | <b>Prize:</b> \$100                                     |
| 6. <b>Gresford District Agricultural Society Committee Members Only</b><br>(incl. Main & Pavilion Committees)  |                     |   |
| Painting - Any Medium / Any Subject  | <b>No Entry Fee</b> | <b>1<sup>st</sup></b> \$30 <b>2<sup>nd</sup></b> \$15   |
| 7. <b>Novice Section:</b> Beginner artist with little or no experience in Art. Any drawing or painting in any medium/subject. Novice artist must not previously won a prize at Gresford Show in Art Section. |                     |   |
|  |                     | <b>1<sup>st</sup></b> \$30 <b>2<sup>nd</sup></b> \$15   |

***People's Choice - Selected at the Art Show Opening on Thursday 12<sup>th</sup> March 2026 by attendees.***  
***The winner receives a dinner for 2 at the Hotel Beatty & a bottle of wine.***

*Sponsored by Bernie Lawler, Hotel Beatty.*

*Visit our web site [www.gresfordshow.com.au](http://www.gresfordshow.com.au) or our Facebook page*

### **Student Art- Painting or Drawing**

Exhibits must be on artists' boards or framed, with back wire and ready to hang.

**Entry fee:** \$1 per exhibit

#### ***Any Subject/ Any Medium***

7. Student aged 16-18 years	1 <sup>st</sup> \$30.00	2 <sup>nd</sup> \$20.00
8. Student aged 13-15 years	1 <sup>st</sup> \$20.00	2 <sup>nd</sup> \$10.00
9. Student aged 10-12 years	1 <sup>st</sup> \$5.00	2 <sup>nd</sup> \$3.00
10. Student aged 6-9 years	1 <sup>st</sup> \$5.00	2 <sup>nd</sup> \$3.00
11. Student aged 5 years and under	1 <sup>st</sup> \$5.00	2 <sup>nd</sup> \$3.00
12. Painting by an Indigenous Artist under 18 years*	1 <sup>st</sup> \$30.00	2 <sup>nd</sup> \$20.00

***\*Indigenous Artists are asked to identify which tribe/mob they identify with on the back of the work***



Visit our web site [www.gresfordshow.com.au](http://www.gresfordshow.com.au) or our Facebook page

**Stewards:** Myffy Doyle and Cathryn Hines

**Entries close:** Monday 9<sup>th</sup> March 2026

- **All exhibits to be in the Stan Kelehear Pavilion no later than 12 noon on the Wednesday prior to the Show, Wednesday 11<sup>th</sup> March 2026.**
- All exhibitors must complete and sign the Insurance Indemnity form, all care taken but the Show Society cannot accept responsibility for loss or damage.
- All exhibits to be collected between 8am and 10am on Sunday 15<sup>th</sup> March 2026, unless otherwise organised with stewards.
- Competitive work must be the original work of entrant. You may NOT enter an exhibit which has previously won a prize, BUT you may enter an exhibit which has not been previously placed at the Gresford Show.
- If for sale please notify the Show Secretary by marking on the entry form that the item is for sale, also state the Sale Price which is to include commission.
- The Show Society's commission of the sale of an exhibit is 20% of the sale price.
- Entry Forms must include a Contact Phone Number.



**Entry fee:** \$1 per exhibit, up to 30 items, then further items have free entry.

**Classes 1 – 10 Prizes:** 1<sup>st</sup> \$20 2<sup>nd</sup> \$10

***Champion & Most Successful Exhibitor from Classes 1 to 9 will be awarded sashes.***

*A description card 4 cm x 8 cm may accompany any article.*

1. Decorative Art - any article
2. Pottery and Ceramics - any article
3. 3D Printed Article - under 20cm
4. Fashion Accessories e.g. screen printed, painted, felt work, jewellery
5. Recycled Material - any article
6. Metal Work - any article ***Sponsored by Doyle Ag & Fabrication.***
7. Woodwork - any article
8. Leather Work - any article
9. Sculpture - any subject/any medium

**\*\*NEW\*\* STUDENT Section-**

***School students encouraged to enter folio works.***

- |  |                      |                     |
|--|----------------------|---------------------|
| 10. 18 years & under – decorative article (any medium) | 1 <sup>st</sup> \$10 | 2 <sup>nd</sup> \$5 |
| 11. 18 years & Under- Woodwork, best article           | 1 <sup>st</sup> \$10 | 2 <sup>nd</sup> \$5 |
| 12. 18 years & Under- Leatherwork, best article        | 1 <sup>st</sup> \$10 | 2 <sup>nd</sup> \$5 |
| 13. 18 years & Under- Metalwork, best article          | 1 <sup>st</sup> \$10 | 2 <sup>nd</sup> \$5 |

---

## Section 16: Photography

---

**Stewards:** Mrs. B. Merriman, Mrs. D. Fletcher and Ms. B. Merriman

**Entry fee:** \$1 per photo

**Entries close:** Monday 9<sup>th</sup> March 2026

**Prizes:** (classes 1 - 11)    **1<sup>st</sup>** \$10    **2<sup>nd</sup>** \$5    **3<sup>rd</sup>** \$3

*Sponsored by Dungog Shire Council and Salt, Chilli & Lime, East Maitland*

- **Photographs to be at the Pavilion no later than 12 noon Wednesday 11<sup>th</sup> March, 2026.**
- All exhibits to be collected between 8am to 10am Sunday 15<sup>th</sup> March 2026 unless otherwise organised with stewards. Photos not collected will be binned unless a pre-paid self-addressed envelope is supplied.

**Conditions of entry for classes 1- 13:**

- Photographs must be taken by exhibitor & have not been previously exhibited at the Gresford Show.
- Maximum size 16cm x 21cm mounted on **thin** black cardboard with up to 2cm border.
- Photographs exceeding the size limits will not be judged.
- Photographs to be labelled on back with photographer's name, address and competing class.
- Number of exhibits in each sub section limited to three (3) photographs per exhibitor.
- Any photographs enhanced must be entered in the experimental section, except for black & white-, and sepia-coloured photographs.

**Conditions of entry for classes 1- 6:**

- The aim is for a more artistic approach and less technical perfection.

***Champion, Reserve Champion and Most Successful Exhibitor in Classes 1 - 12 will receive a sash.***

**1. Landscape or Waterscape** – including sunrises, sunsets & misty scenes

**2. People** – Portrait or any recognisable part of a body or any number of people

**3. Plants**

**4. Animals**

**5. Open** – Any subject, such as buildings, architecture & inanimate objects

**6. Experimental** – abstract, indistinguishable subject, computer manipulation and experimental developing



*Visit our web site [www.gresfordshow.com.au](http://www.gresfordshow.com.au) or our Facebook page*

## STUDENT PHOTOGRAPHY SECTION

*Class 7 – 12: the aim is for a more artistic approach and less technical perfection.*

7. Landscape or Waterscape – including sunrises, sunsets & misty scenes

8. People – Portrait or any recognisable part of a body or any number of people

9. Plants

10. Animals

11. Open – Any subject, such as buildings, architecture & inanimate objects

12. Experimental – abstract, indistinguishable subject, computer manipulation & experimental developing.

### **13. Dungog Shire Photography Prize –**

open to Dungog Shire residents

**Prizes: 1<sup>st</sup> \$65    2<sup>nd</sup> \$35    3<sup>rd</sup> \$10**

*Sponsored by Dungog Shire Council*

*Open to all entries in Classes 1 - 12 (Must be stated on entry form).*

The photographs must be of subjects from within Dungog Shire, such as activities of people, local flora and fauna, scenery, and buildings, etc. A condition of entry is that all photographs are given to Dungog Shire Council for promotional purposes etc. If used by Council the photographers name would be acknowledged.



Visit our web site [www.gresfordshow.com.au](http://www.gresfordshow.com.au) or our Facebook page



**Stewards:** Rosalie Lawrence

**No entry fees.**

**Entries close:** Monday 9th March 2026

**Prizes:** 1<sup>st</sup> \$3 2<sup>nd</sup> \$2 3<sup>rd</sup> \$1

*Sponsored by Gresford Foodworks and The Cook Family*



- **Craft & Paintings** items to be in the pavilion no later than **12noon, Wednesday 11th March 2026.**
- **Cooking** to be at pavilion before **9am Thursday 12th March 2026.**
- **Flowers & Vegetable Animals** in sections 14 and 4 respectively.
- Entries close Monday 9<sup>th</sup> March 2026 - no late entries.
- All exhibits to be entered at own risk. All care taken but no responsibility for loss or damage.
- Only one entry per child in each class
- Lego exhibits to be bought & displayed by exhibitor (no kits; size limit 25cm x 25 cm).
- Articles must be child's own work.
- Each article must have a label attached (removable for judging) and this must show:  

<b>1. Name</b>	<b>2. Age</b>	<b>3. Class - name and number</b>
----------------	---------------	-----------------------------------
- Article must be in one piece (glued, sewn, nailed, etc.)
- Entries not to have been previously entered at the Show.
- All exhibits to be collected between 8am to 10am Sunday 15<sup>th</sup> March 2026 - unless otherwise organised with stewards.
- Prizes will be paid at cashier's office on completion of judging.

***A \$5 prize & ribbon awarded to the most successful exhibitor in each age group (only if more than 5 entries by the exhibitor in that age group)***

### **16 Years & Under**

1. Best Piece of Woodwork
2. Best Piece of Hand Sewing - cross stitch or long stitch (mounted)
3. Necklace made from any media
4. Pottery - slab, pots, etc
5. Best printed sample screen, batik or tie-dye
6. Small Gift for Mother's Day
7. Christmas Decoration
8. Best Machine-Made garment
9. Chocolate cake - iced on top, round tin, no packet mixes
10. Six Cupcakes - decorated

### **13 Years & Under**

11. Best Piece of Needlework - hand done
12. Article made from paddle pop sticks
13. Small Gift for Mother's Day
14. Lego Construction - no kits, size limit 25cm x 25cm
15. Greeting Card for Christmas or Easter

*Visit our web site [www.gresfordshow.com.au](http://www.gresfordshow.com.au) or our Facebook page*

### **13 Years & Under- Continued:**

16. Article made from waste material that has been previously used (e.g. plastic, timber, paper metal, etc.) left over scraps of new material or recycled clothing NOT allowed. Size limit 30cm x 30cm x 30cm.
17. Necklace made from any media
18. Novelty Cake - decorated
19. Six Cupcakes - decorated
20. Packet Cake Mix - plain butter cake, iced on top, round tin & please supply packet cover

### **11 Years & Under**

21. Article made from Wool
22. Article made from paddle pop sticks
23. Best piece of Needlework – hand done
24. Best Collage
25. Greeting Card for Christmas or Easter
26. Lego Construction - no kits, size limit 25cm x 25cm
27. Clay or Playdough model
28. Necklace made from any media
29. Article made from waste material that has been previously used (e.g. plastic, timber, paper, metal, etc.) left over scraps of new material or recycled clothing NOT allowed. Size limit 30cm x 30cm x 30cm.
30. Novelty Cake - decorated
31. Anzac Biscuits - 6 on a plate
32. Six Cupcakes - decorated
33. Packet Cake mix - Carrot Cake - round tin, no icing & please supply packet cover

### **9 Years & Under**

34. Article made from Wool
35. Article made from paddle pop sticks
36. Lego Construction - no Kits, size limit to 10" x 10"
37. Necklace - made from any media
38. Greeting Card for Christmas or Easter
39. Best Collage
40. Clay or Playdough model
41. Article made from waste material that has been previously used (e.g. plastic, timber, paper metal, etc.) left over scraps of new material or recycled clothing NOT allowed. Size limit 30cm x 30cm x 30cm.
42. Plain Patty Cakes - 6 on a plate, not iced, no packet mixes, papers allowed
43. Jam Drop Biscuits- 6 on a plate, no packet mixes

### **7 Years & Under**

44. Best Face Mask - Animal or Bird
45. Lego Construction - no kits, size limit to 10" x 10"
46. Clay or Playdough model
47. Greeting Card for Christmas or Easter
48. Decorated Pet Rock (no larger than 8cm in diameter and 5cm in height)
49. Best Collage
50. Plain Pikelets - 6 on a plate, no packet mixes, no buttered
51. Coconut Ice - 6 pieces on a plate, pink & white

### **5 Years & Under**

- 52. Best Face Mask - Animal or Bird
- 53. Decorated Pet Rock - no larger than 8cm in diameter and 5cm in height
- 54. Clay or Playdough model
- 55. Best Collage
- 56. Apricot Balls - 6 on a plate
- 57. Iced & Decorated Milk Arrowroot biscuits - 6 on a plate

### **Student Art Classes**

- *All children's artwork to be done under school supervision or accompanied by a note from his/her teacher.*
- *Artwork must be done using paints only and on paper no larger than A3.*
- *No crayons, textas, pencils, charcoal or collage effects, no canvases, no cardboard etc.*

**No entry fee / one entry only per child**

**Prizes: 1<sup>st</sup> \$3 2<sup>nd</sup> \$2**

58. 3 to 5 years (Pre-School)

59. 7 Years & under

60. 9 Years & under

61. 11 Years & under

62. 13 Years & under

Painting Subject: "My Favourite Place"

Painting Subject: "My Favourite Place"

Painting Subject: "My Favourite Place"

Painting Subject: "My Favourite Place"

Painting Subject: "My Favourite Place"



## **Lawrence Family Trust**

For all your livestock, property management and rural contracting needs  
Call Scott on 0428 490 549

Visit our web site [www.gresfordshow.com.au](http://www.gresfordshow.com.au) or our Facebook page